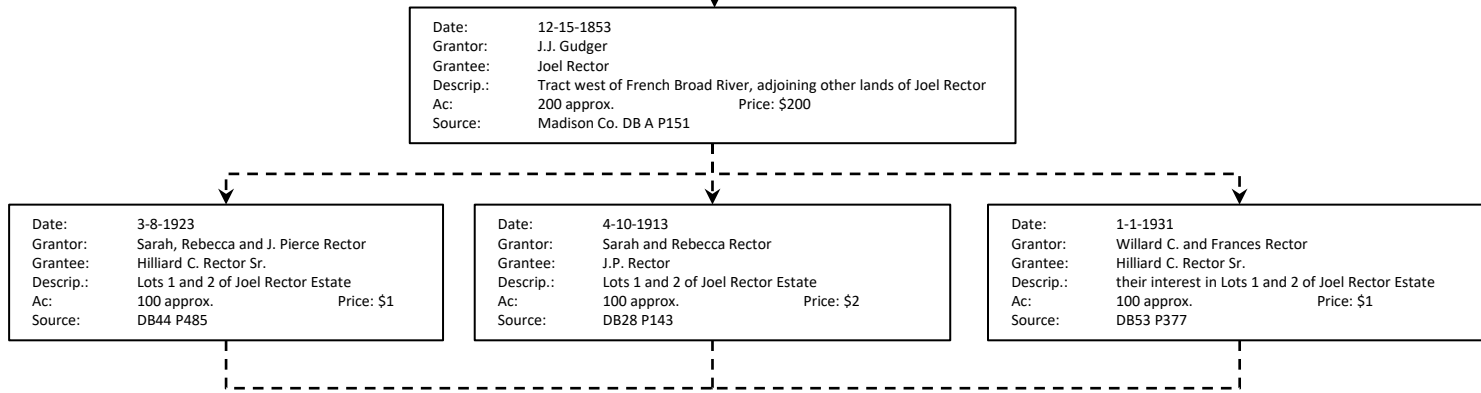




Figure 1. The Ronny McBride property, as outlined and described by the Madison County Tax Dept., August 2018 (cyan outline). The tract is located along HC Rector Farm Road, off of Rector Corner Road, in the South Marshall township of southern Madison County. The barn-of-interest, the Pierce Rector barn, indicated, is located in the southeastern corner of the tract. The location of the property, within Madison County, is shown by the index map to the upper right.

See previous documentation for the earlier history of the 50,000-acre J.J. Gudger tract

1853-1931
The exact tract lineage is unknown due to ambiguous tract descriptions, though circumstantial evidence suggests these were key deeds in the history.



1966 - 2007
The barn tract history from the children of H.C. Rector, Sr. to the present property owner is well defined.

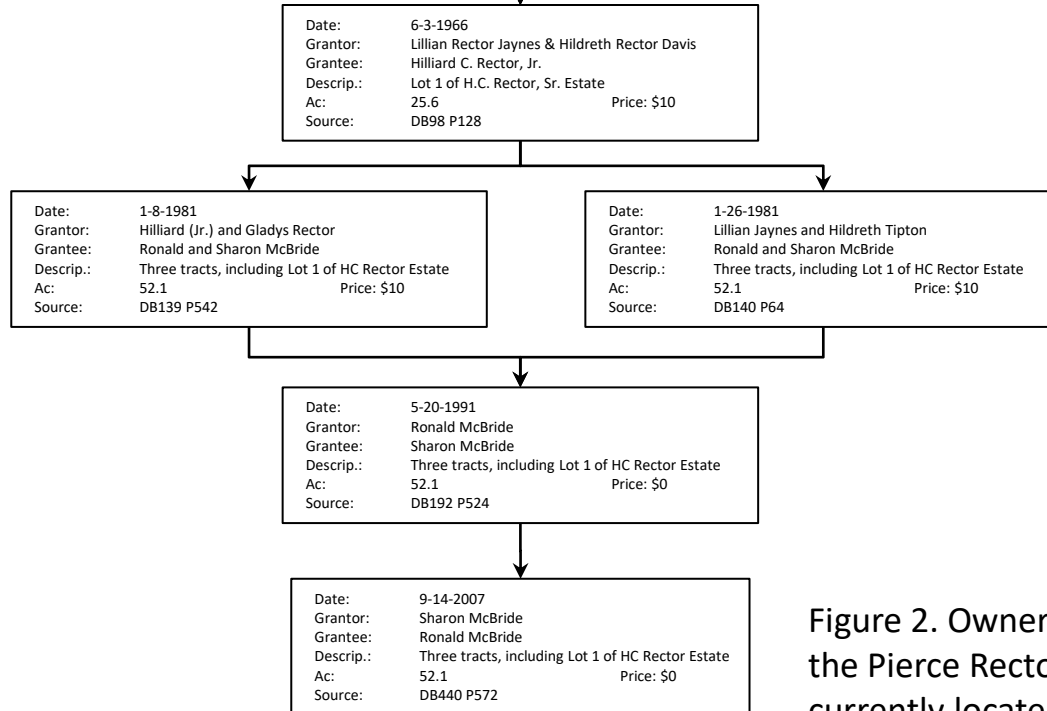


Figure 2. Ownership history of the Pierce Rector barn tract, currently located on the Ronnie McBride property.

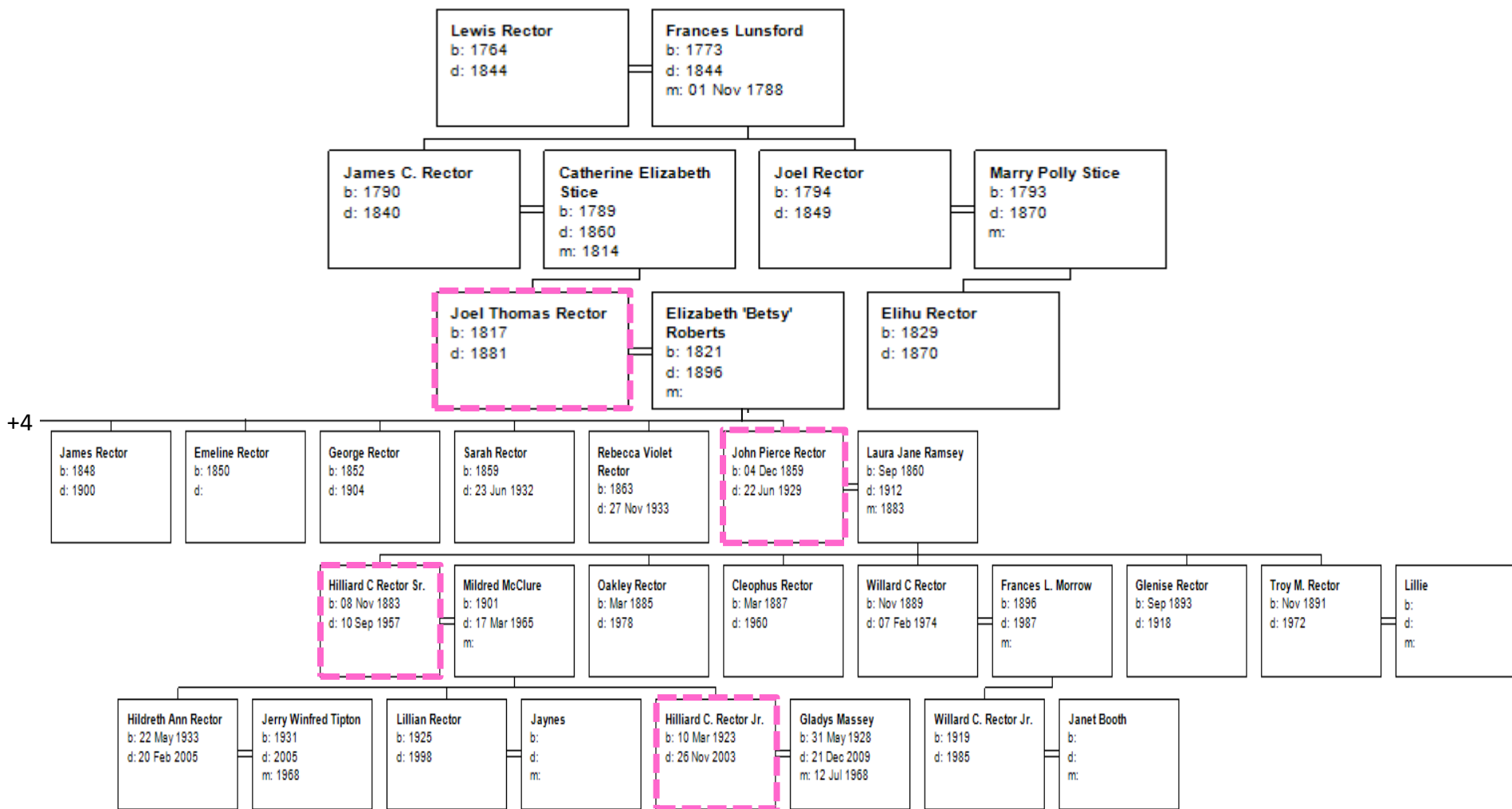


Figure 3. A portion of the Rector family tree, showing selected dependents of Lewis Rector. Though Lewis did own property in the area, the earliest ownership of the barn tract is traced to Joel Rector, Lewis’s grandson. The tract remained in the Rector family for over 140 years, last owned by Joel’s great grandson, Hilliard C. Rector, Jr. in 1981. For readability, four of Pierce Rector’s older siblings are not shown on this chart, indicated by the ‘+4’.

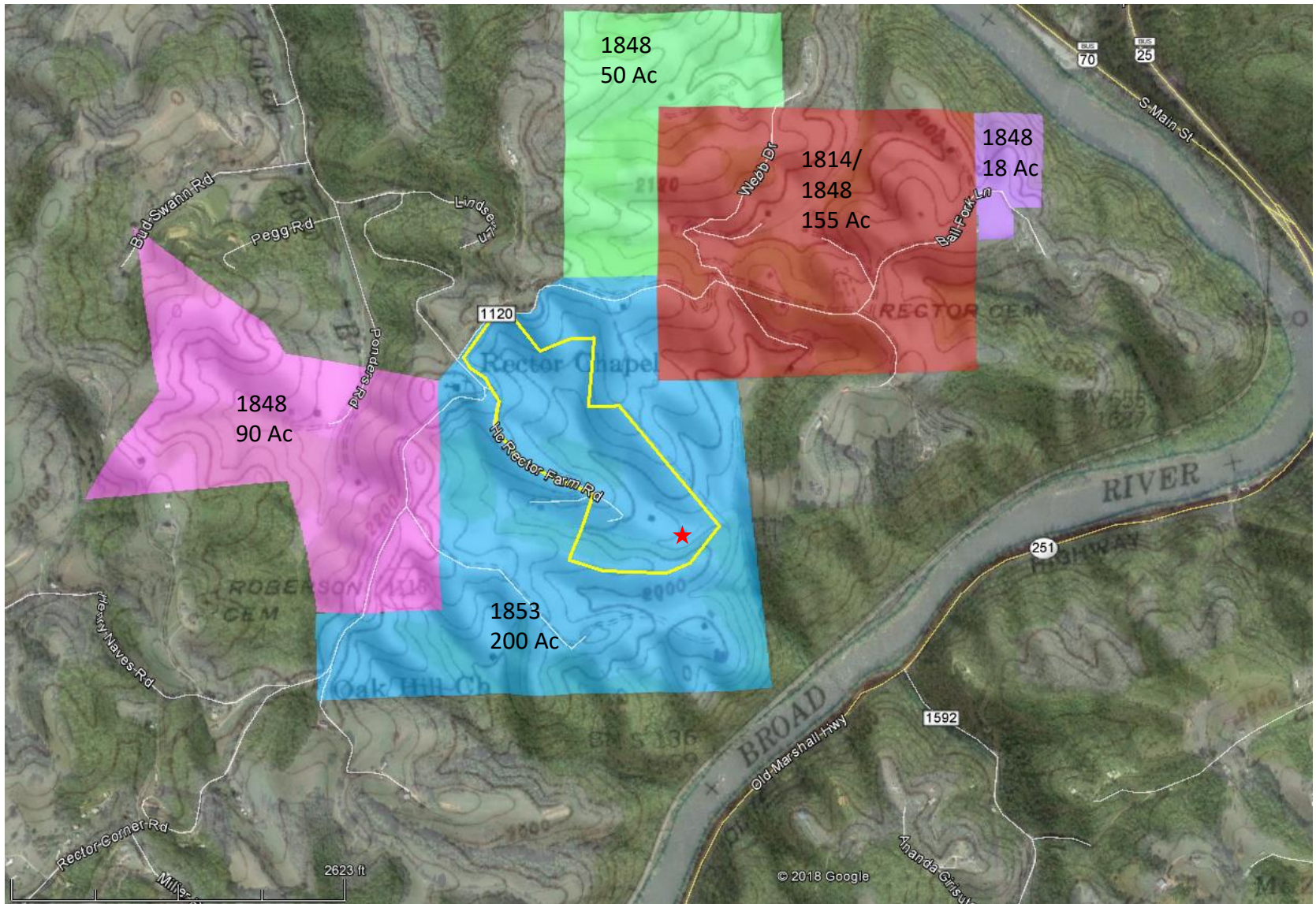


Figure 4. Google Earth map, with topographic overlay, showing a number of the early tracts acquired by Joel Rector in 1848 and 1853. The tract outlines are approximated based on multiple tract descriptions, though it is known the tracts were contiguous across the area. The outline of the current Ronny McBride property is outlined in yellow, with the barn location shown by the red star.

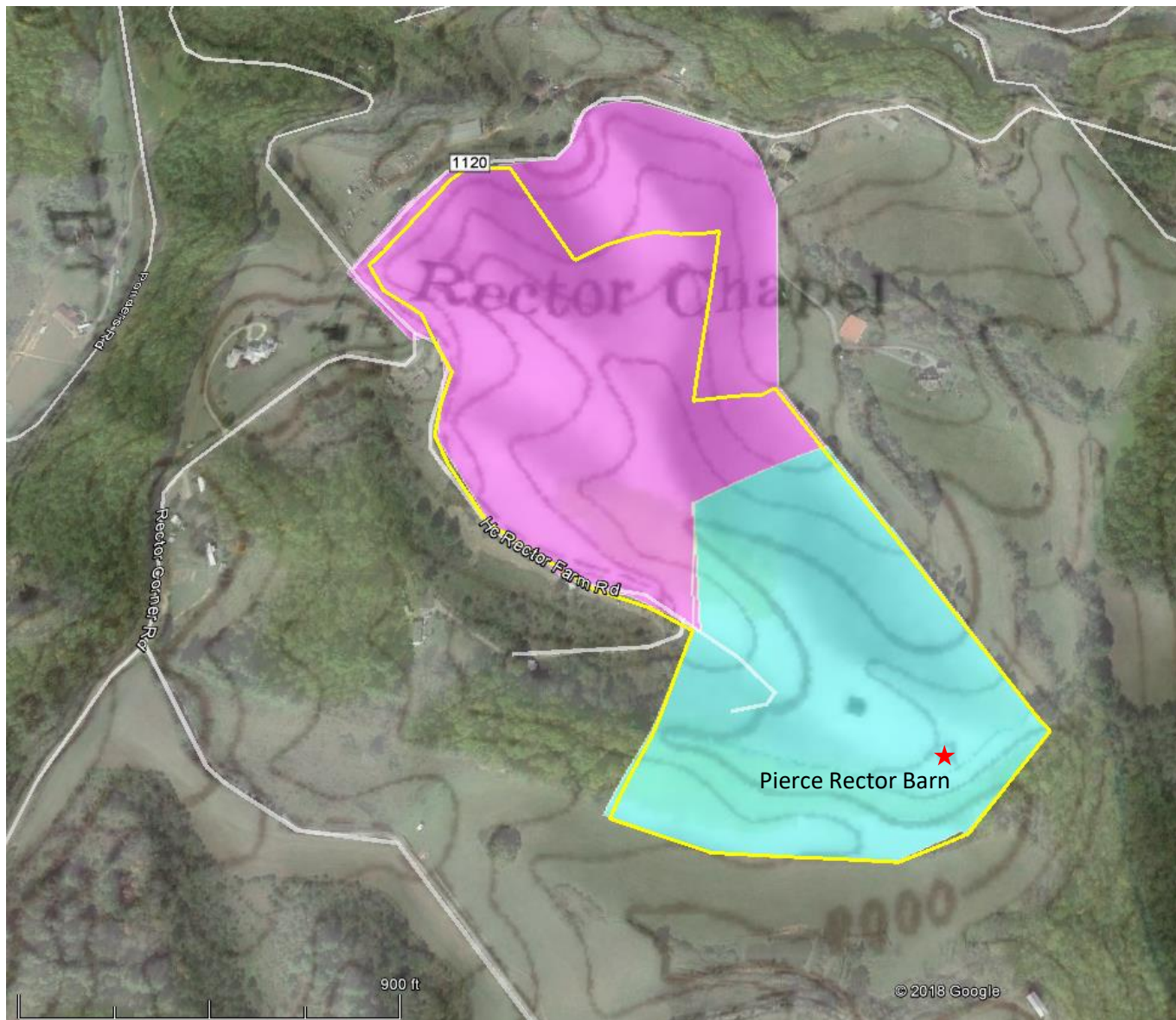


Figure 5. Google Earth map, with topographic overlay, showing the two tracts conveyed to H.C. Rector, Jr. in 1966 and later sold to Ronnie McBride in 1981. The outline of the current Ronny McBride property is outlined in yellow, with the barn location shown by the red star.