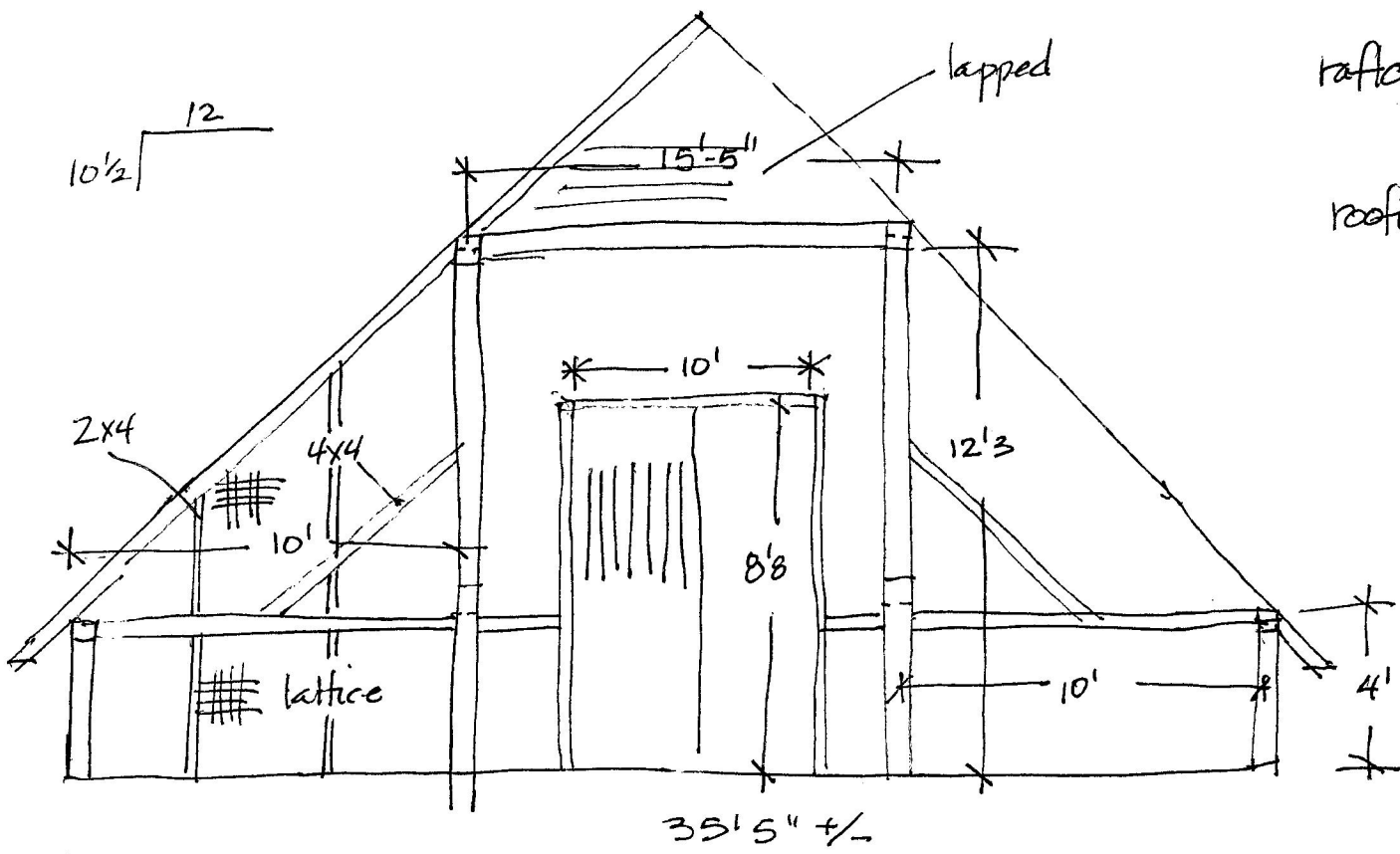


N 35° 53' 36" Elev. 2613

W 82 27.480

John Martin 2.7.13

Lenny Whitaker: bilt by Cornelius Buckner circa 1858 (not correct) ~~21.3 in~~ 1:46



rafters 2x4 +/-
@ 24 o.c. +/-

roofing batt
1x1 1/2 @ 8"-9" o.c.

