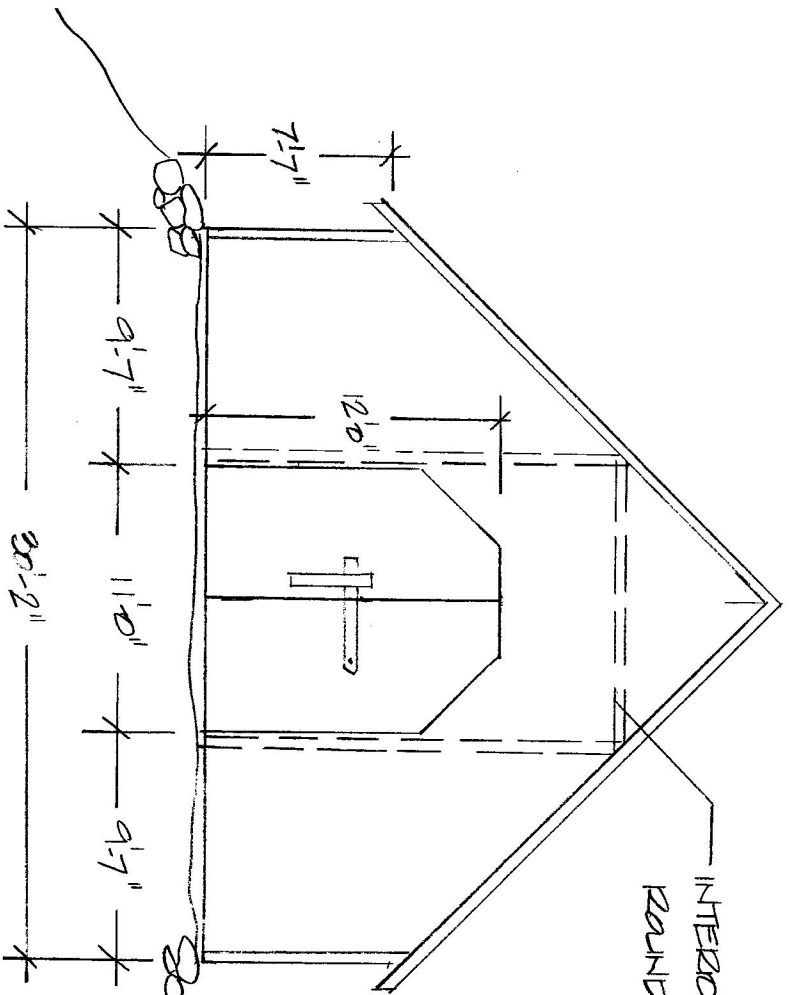


TOM BROWN / ROY LEDGER BARN



EAST ELEVATION

$\frac{1}{8}'' = 1' - 0''$

INTERIOR POST & BEAM STRUCTURE  
ROUND POSTS, 4" X 4" PLATES

POSTS @ 13'-2", 13'-2", 13'-11" SPACING, E TO W  
WALL FRAMING: 2X4 @ 24" O.C. W/  
DOUBLE 2X4 PLATE

NOTE: OLD SILD FOUNDATION  
ON WEST SIDE  
10'-2" DIA. ROUNDED CONC. PNDTN  
ASSUME WOOD SILD

THIS BARN USED AS BURLLEY  
BARN BUT TIER POLES  
HAVE BEEN REMOVED